



Energy Efficiency
PROGRAM

AmerenIllinoisSavings.com

A white rectangular box with a thin border containing the text "PY22 INCENTIVE OVERVIEW" in a bold, white, sans-serif font. The box is centered on the page and overlaid on a background of hands shaking and various icons.

PY22 INCENTIVE OVERVIEW

Notable Incentive and Eligibility Changes

- 10+ megawatt customers are eligible to receive incentives (some customers may choose to opt-out of the Program)
- Commercial Grow Lighting standard incentives
- Enhanced incentives for Networked Lighting Controls
 - Luminaire-Level Lighting Controls Program Ally incentive pilot extended through Q1 2022
- Telecom Data Center application
- Ground-Source Heat Pump incentives
- New incentives for:
 - Industrial Facilities
 - Lighting
 - HVAC
 - Refrigeration

- Interior & Exterior LEDs: \$0.20 - \$0.45/watt reduced
- LED Cooler/Freezer Lighting: \$0.20 - \$0.45/watt reduced
- Permanent Lamp Removal: \$0.15/watt reduced
- Occupancy Sensors: \$40/control (\$20 for low wattage)
- Occ+Daylight: \$50/control (\$25 for low wattage)
- Networked Lighting Controls: \$0.40 - \$0.75/watt reduced

New Measure!

- Commercial Grow Lighting \$0.60/watt reduced, up to \$100,000



- Non-standard lighting projects
 - Large grow facilities
 - Type A mogul base
 - Special offerings (CLIP)
- \$0.12/kWh saved
 - Capped at 80% of project cost
- \$0.18/kWh saved (Public Sector or DS2)



New Construction Lighting

- Interior Lighting: \$0.16 - \$0.18/kWh based on percent improvement over code baseline
- Exterior Lighting: \$0.17/kWh
- Total New Construction Lighting incentive capped at \$150,000



- DLC Exterior Lighting: \$0.75/watt reduced
 - Includes all exterior municipality-owned post lighting; i.e. parking lots, parks, walkways, exterior lighting.
- New Street Light Incentive: \$70/light



Instant Incentives for Lighting

Purchased through distributor – no paperwork!

Current rates through the end of the year; 2022 rates are still TBD:

- LED Decorative: \$4.00
- LED Directional (PAR): \$9.00
- LED Directional (BR, MR, R): \$3.00
- LED Downlight Fixtures: \$6.00
- LED Linear \$3.00 - \$9.00
- LED Mogul \$30 - \$250



Visit AmerenIllinoisSavings.com/Instant for more information

- Excel-based application
- Includes all new construction equipment incentives in one place:
 - Lighting
 - HVAC
 - Specialty equipment
 - Custom



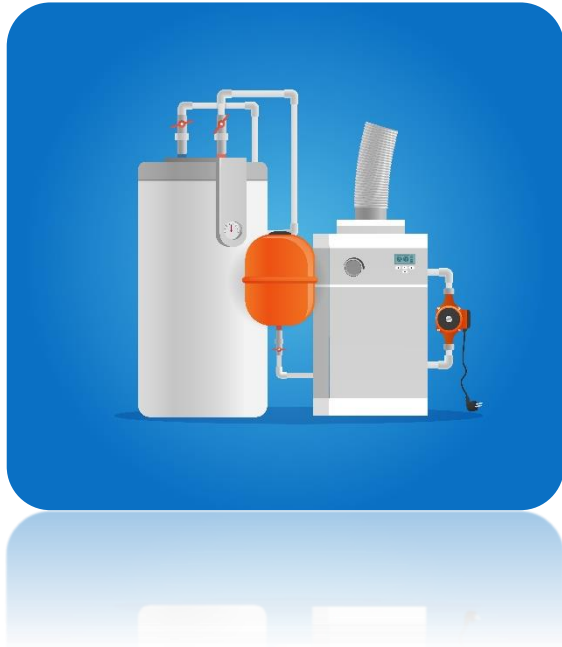
Instant Incentives for HVAC and HPWHs

Purchased through distributor – no paperwork!

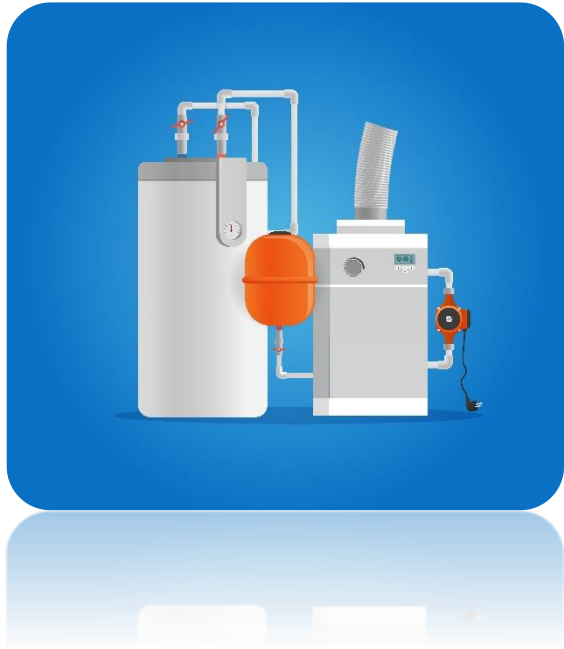
Current rates through the end of the year, 2022 rates are still TBD:

- Notched V-belt
 - AX section: \$10/belt
 - BX section: \$15/belt
- Smart Thermostats: \$100/thermostat
- Central Air Conditioners less than 135 MBH
- Air Source Heat Pumps less than 135 MBH
- Heat Pump Water Heaters

Visit AmerenIllinoisSavings.com/Instant for more information



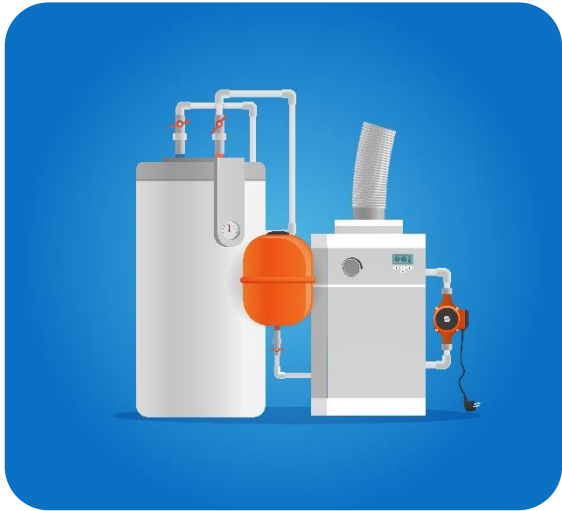
- Air Conditioners and Heat Pumps greater than 135 MBH
 - 135-239 MBH: \$600
 - 240-759 MBH: \$900
 - >760 MBH: \$1,600
- High Efficiency Gas Furnaces
 - 40-140 MBH: \$400
 - 141-225 MBH: \$500
- High Efficiency Gas Furnaces: Early Replacement
 - 40-140 MBH: \$1,000
 - 141-225 MBH: \$1,100



- Ground-Source Heat Pump: \$500/ton (up to \$25,000)
- Air-cooled Chillers: \$3000
- Advanced Rooftop Controls: \$200/ton
- HVAC Condensing Furnace: \$3.00/kBtuh
- HTHV Direct Fired Heater: \$6.00/kBtuh
- Gas Air Heater: \$3.00/kBtuh
- Demand Controlled Ventilation: \$0.15/sq.ft.

New Measure

- **Commercial Weather Stripping: \$5/lin.ft.**



- Gas Boilers: \$1,000 - \$6,500
- Boiler Controls: \$1.50/kBtuh up to \$1,500
- Multifamily Hot Water Controls: \$50/living unit
- Condensing Tanked Gas Water Heater: \$300
- Tanked Gas Water Heater: \$150

- Faucet Survey: \$2/faucet
- Faucet Aerators: \$3/aerator
- Laminar Flow Restrictors: \$8/restrictor
- Showerheads: \$12/showerhead



Standard Aerator



Laminar Flow Aerator

- High Efficiency Fans: \$25 - \$100
- High Volume Low Speed Fans: \$1,000
- Ventilation Fan Controller: \$50
- Livestock Waterer (electric heat): \$250
- Milk Pre-Cooler: \$2,500
- Scroll Compressor for Dairy Refrigeration: \$750



New Application!

- Uninterruptable Power Supply (UPS): \$50/unit (Telecom-only)
- Efficient Rectifier: \$5/kW
- Equipment Consolidation: \$400/retired equipment





- No-Loss Condensate Drains: \$400/drain
- Compressed Air Nozzles: \$60/nozzle
- Compressed Air Filters: \$450/filter
- High Frequency Battery Chargers: \$500/unit

New Measures

- Compressed Air Heat Recovery: \$50/hp
- Compressed Air Storage Tank: \$2.50/gal increase
- Tank Insulation: \$12/sq. ft.
- Efficient Hydraulic Oils: \$10/hp



- Electric Cooking Equipment: \$180 - \$1,100
- Gas Cooking Equipment:
 - Private: \$250 - \$1,400, Public: \$750 - \$2,000
- Electric and Gas Steamers:
 - Private: \$1,000 - \$2,000, Public: \$2,000 - \$3,600
- Low Flow Pre-Rinse Spray Nozzle: Free



- Kitchen Demand Ventilation:
 - Private: \$400/hp, Public: \$800/hp
- High Temperature Dishwashers: \$400 - \$2,000
- Guest Room Energy Management: \$100/controlled PTAC, PTHP
- Ultra Low Temperature Freezer: \$500 - \$600/freezer
- Commercial Laundry: See Application
- Pool Equipment: See Application



- Door Closer for Walk-in Freezer/Cooler: \$120/closer
- Night Covers: \$25/lin. ft.
- Anti-Sweat Heater Controls: \$50/door
- Solid Door Freezers: \$35 - \$250/freezer
- Glass Door Freezers: \$300 - \$500/freezer
- EC Motors for Walk-in Coolers: \$60/motor



- EC Motor Controls: \$110/control
- Q-Sync Motors: \$50/motor
- VSD on Supermarket Condenser Fans: \$255/fan
- **New Measure: Refrigerated Case Doors: \$100/lin. ft.**
- Many of these measures also available through Small Business Direct Install (SBDI)

- VFDs for Pumping, Air Handling, and HVAC: \$125/hp
 - Process fans
 - Boiler draft fans
 - Process pumps
 - HVAC fans
 - Chilled and hot water pumps
 - Air compressors



Standard Steam Traps

- Steam Trap Monitoring: \$150/trap
 - Additional incentives available to replace failed traps
- HVAC Steam Traps
 - Survey: \$30/trap
 - Repair/replacement: \$100/trap
- Industrial Steam Traps
 - Survey: \$30 - \$50/trap
 - Repair/replacement: \$100 - \$500 based on psig
 - Higher incentive paid on monitored traps

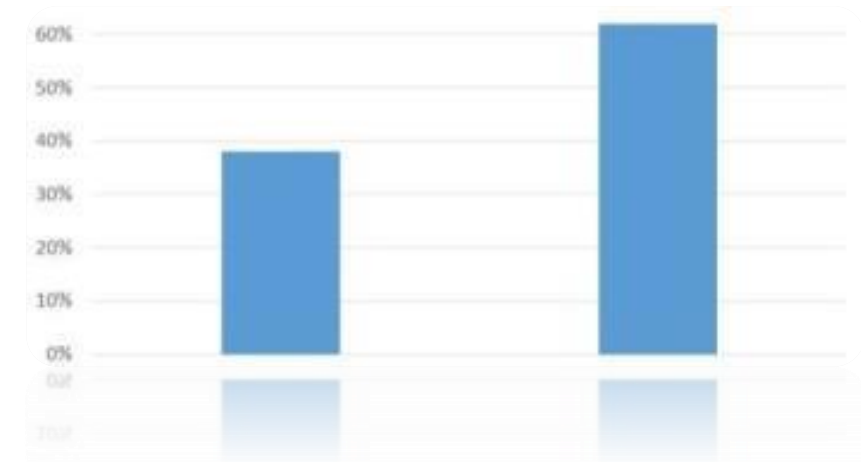




- Identifies no-cost and low-cost energy efficiency measures to optimize systems
- RCx incentives available for:
 - Large facilities
 - Includes healthcare and commercial buildings
 - Industrial refrigeration

- RCx Lite is designed for facilities that are 100,000 sq.ft. or smaller, or for larger facilities without an Energy Management Control System.
- Focuses on specific areas of the facility
- Covers up to 100% of the survey cost

- Base incentive: lesser of 25% of install cost or \$10,000 once software is installed
- Performance incentive: \$0.04/kWh or \$0.10/Therm saved, capped at 75% of install cost or \$20,000 (whichever is less)
- Cannot be combined with other special offerings (Custom CLIP, Staffing Grants, etc.)
- Limited number of applications accepted
- Pre-Approval required



- Private
 - Electric Incentives: \$0.12/kWh
 - Gas Incentives: \$0.75/Therm
- Public Sector and DS2/GS2
 - Electric Incentives: \$0.18/kWh
 - Gas Incentives: \$1.50/Therm
- Capped at 80% of project cost
- Pre-Approval required



- Submitted as a Custom Application
- Targeting manufacturing/industrial facility improvements to (or expansion of) process lines/systems that generate higher production coupled with higher overall energy usage
- Achieved by reducing Energy Intensity (i.e., reduced kWh/unit or Therms/unit produced)
- Annual energy savings determined by: Reduction per Unit x Annual Production Rate
- Must meet Custom project financial eligibility criteria (i.e., 6 month to 10year simple payback)
- Receive Custom incentive rate: \$0.12/kWh or \$0.75/Therm reduced



- Pre-Approval required
- Up to 6 months to complete the study
- Incentives cover up to 75% of the cost up to \$20,000
- Cannot be combined with Staffing Grant, Metering and Monitoring performance incentives, or Retrocommissioning



- Projects must be completed by October 31, 2023
- Limit one study per facility at a time unless separate vendors are needed
- No limit on studies a Program Ally can do in a year, but if two studies do not lead to projects then incentives may be limited
- Cannot be used for lighting projects (other than new construction)

- For all electric customers, there is an additional incentive for water savings
- Savings from reduced Potable Water Supply Use
 - \$0.30 per 1000 gallons per year
- Savings from Wastewater Treatment Disposal
 - \$0.30 per 1000 gallons per year



Public Sector: Local Government, Public Schools, and Community Colleges

- Public Standard HVAC/Water Heaters Application
- Public Standard Specialty Equipment - Hospitality Application
- Municipality-Owned Streetlights Application (and municipal parking lots): \$0.75 per Watt reduced
- Custom Incentive Applications and Custom CLIP projects receive enhanced Public Sector incentive rates per kWh or Therm saved
- Local Government criterion includes villages, cities, townships, counties, public water facilities, mass transit systems, airports, parks, hospital districts, library districts, police stations and fire stations

State Entities, Federal Entities, and State Universities

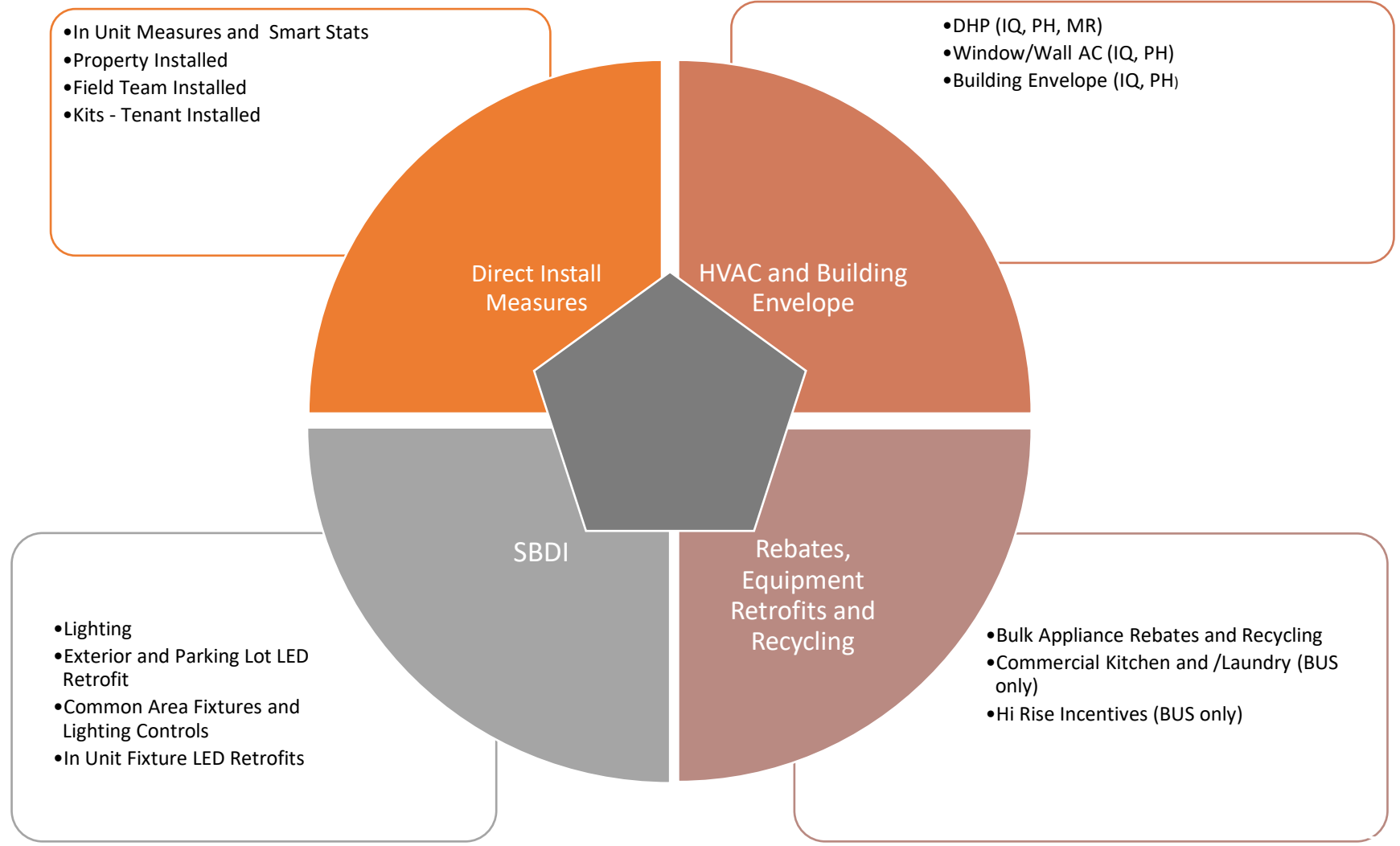
- Use Private Standard Applications
- Custom and Custom CLIP projects receive enhanced Public Sector incentive rates

Bonuses

- All Public Sector Customers eligible for Early Completion Bonus monies or use of Annual Business Symposium Bonus coupon (if applicable)
- Public Schools and Community Colleges eligible for 10% Summer Break Bonus for projects completed between June 1st and August 31st

Multifamily: One Stop Shop Format

Working Smoothly Across Initiatives with Allies and Properties



1 **Rob Tortat**, Energy Advisor
1.309.339.5802
rtortat@cmcenergy.com

Hilario Hernandez, Energy Advisor
1.309.648.9046
hhernandez@cmcenergy.com

2 **Jeff Eccles**, Energy Advisor
1.773.418.0096
jeccles@cmcenergy.com

3 **Richard Rockett**, Energy Advisor
1.314.265.1502
rrockett@cmcenergy.com

Ron Siddle, Program Manager
1.618.570.9783
rsiddle@cmcenergy.com



A person wearing a blue long-sleeved shirt is sitting on a couch, using a silver laptop. The laptop screen displays the Ameren website. A white text box with a thin border is overlaid on the laptop keyboard area.

CUSTOMER BONUS

- Early Completion Bonus (ECB) for projects completing in first nine months of 2022. Automatically added to base incentive payout
- Summer Break bonus for K-12 schools and community colleges for projects completing during the summer. This payout would supersede the ECB's payout rate. Automatically added to base incentive payout
- Symposium 15% Bonus Coupon for attending last October's Annual Business Symposium. **Must be submitted with the project application to be eligible for use!**
- Unless otherwise noted, bonuses are applicable **only** to Standard and Custom (regular and CLIP) projects, not to other project types or special offerings
- Bonus is paid as a percentage of the project's base incentive payment
- Some bonuses are capped
- No "bonus stacking" is allowed

2022 Customer Early Completion Bonus



- Early Completion Bonus for both Gas and Electric projects:

BONUS AMOUNT:	PROJECT COMPLETED BY:
15%	March 31
10%	June 30
5%	Sept. 30

- Applicable **only** to Standard and Custom (regular and CLIP) projects. Not applicable to other project types or special offerings
- Bonus is paid as a percentage of the project's base incentive payment
- Capped at \$10,000 per project

- 10% Bonus for public and private K-12 schools, plus community colleges, for projects competing between June 1st and August 31st
- Cannot be combined with the Early Completion Bonus (no “bonus stacking”)
- Not applicable to SBDI, only for Standard and Custom projects



A person wearing a blue long-sleeved shirt is sitting on a couch, using a silver laptop. The laptop screen displays the Ameren website. A white text box is overlaid on the laptop keyboard area.

AmerenIllinoisSavings.com

- Website URL:
AmerenIllinoisSavings.com
- Website always has the most up-to-date information
- Find applications, Program guides and other necessary forms
- Review how-to videos, previous webinars, and other educational content



A close-up, over-the-shoulder view of an electrician wearing a bright orange hard hat and a yellow safety jacket with reflective blue stripes. The electrician is looking at a complex electrical panel with various wires and components. A semi-transparent white box with a thin black border is overlaid on the center of the image, containing the text "ICC INSTALLER CERTIFICATION".

ICC INSTALLER CERTIFICATION

What is Installer Certification?

- Illinois energy legislation requires contractors who are installing energy efficiency measures to be certified with the Illinois Commerce Commission (ICC)
- Applies to any measure that requires an electrical connection
AND
Applies to any measure that will receive an incentive of \$300 or more
- Certified installers agree to comply with building and electrical codes and manufacturer's installation instructions
- Self-installed measures (those installed by an internal employee or staff member) are excluded from the certification requirement

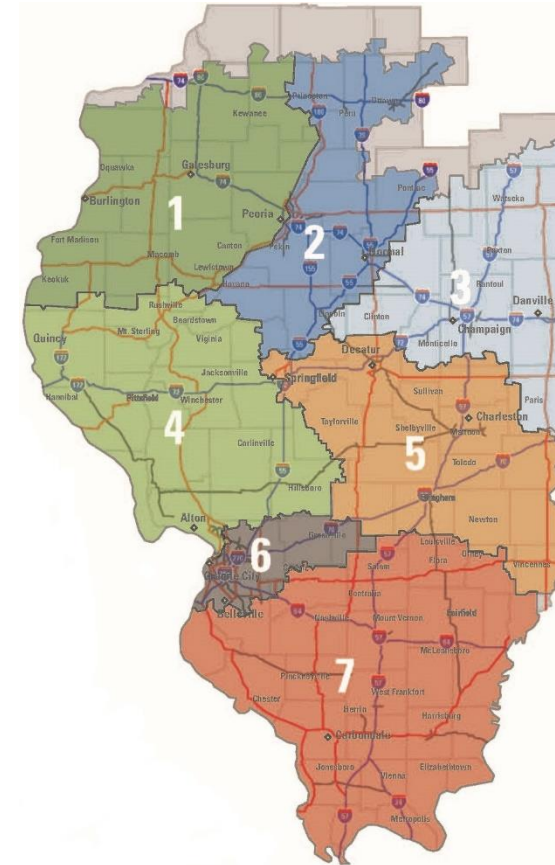
Recertification Details

- Certified energy efficiency measures installers must submit a recertification report
- Installer Recertification must be submitted to the ICC between Jan. 1 – June 1 annually to avoid ICC late fees
- There are no fees to recertify, however, late fees could be high if your recertification isn't submitted by June 1 annually
- Our Program cannot issue incentive payments until recertification is up-to-date
- [AmerenIllinoisSavings.com/Installer](https://www.AmerenIllinoisSavings.com/Installer)

A close-up, shallow depth-of-field photograph of a person's hands typing on a laptop keyboard. The person is wearing a blue button-down shirt. The background is softly blurred, showing a desk with a pen holder and a white coffee cup. A white rectangular box with a thin border is centered over the keyboard area, containing the text "CUSTOMER SUPPORT".

CUSTOMER SUPPORT

- Energy Advisors available for large and small business customers, based on designated rate code.
- Field personnel available to help with technical and project-related questions
- Can help with project requirements, dates, and deadlines



1

Chad Whitehead

Chad.Whitehead@gdsassociates.com
309.620.6333

2

Steven Smith

Steven.L.Smith@leidos.com
309.212.5831

3

Rod Rhoads

Rod.Rhoads@gdsassociates.com
217.649.8897

4

Mark Steinmetz

Mark.Steinmetz@gdsassociates.com
217.670.9606

5

Michael Harrison

Michael.Harrison@leidos.com
309.212.1490

6

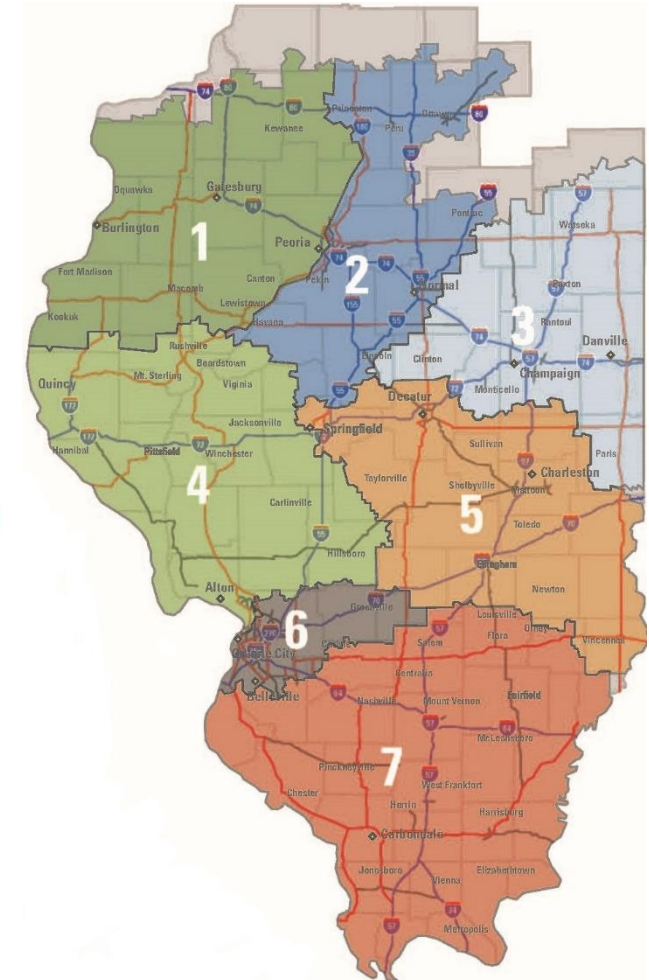
Linda Meglio-Andres

Linda.M.MeglioAndres@leidos.com
636.445.0292

7

Larry Erwin

Lawrence.F.Erwin@leidos.com
309.838.2340



- Friendly, knowledgeable staff are able to answer your questions quickly or refer you to the right person
- Can help verify customer eligibility
- **BUS: 1.866.800.0747**



SMALL BUSINESS
DIRECT INSTALL

WELCOME
— WE ARE —
OPEN
— PLEASE COME IN —

Small Business Direct Install (SBDI)

- Requires additional Program Ally training and registration
- Only DS2 and DS3-A customers are eligible
- Incentives include installation
- Mostly lighting measures, with refrigeration measures added in 2021
- All applications calculated and submitted through the SnapShot software tool – creates an assessment report and agreement to show the customer
- All incentives are paid directly to the Program Ally only through Direct Deposit
- Highest possible incentives for eligible customers



- On-site, mobile device options in SnapShot:
 - E-signatures on assessment and work order with automatic dates
 - Take pictures from your device and upload to the project automatically
 - Easily upload PDF documents by dragging the files into appropriate folders
- Easy access to your project information in SnapShot
 - Program Ally dashboard
 - Program Ally reports
 - Monitor project status until incentives are paid



1 **Gretchen Primeau**
gprimeau@skilldemand.com
1.312.285.9244

2 **John Griffard**
jgriffard@ameren.com
1.309.262.2749

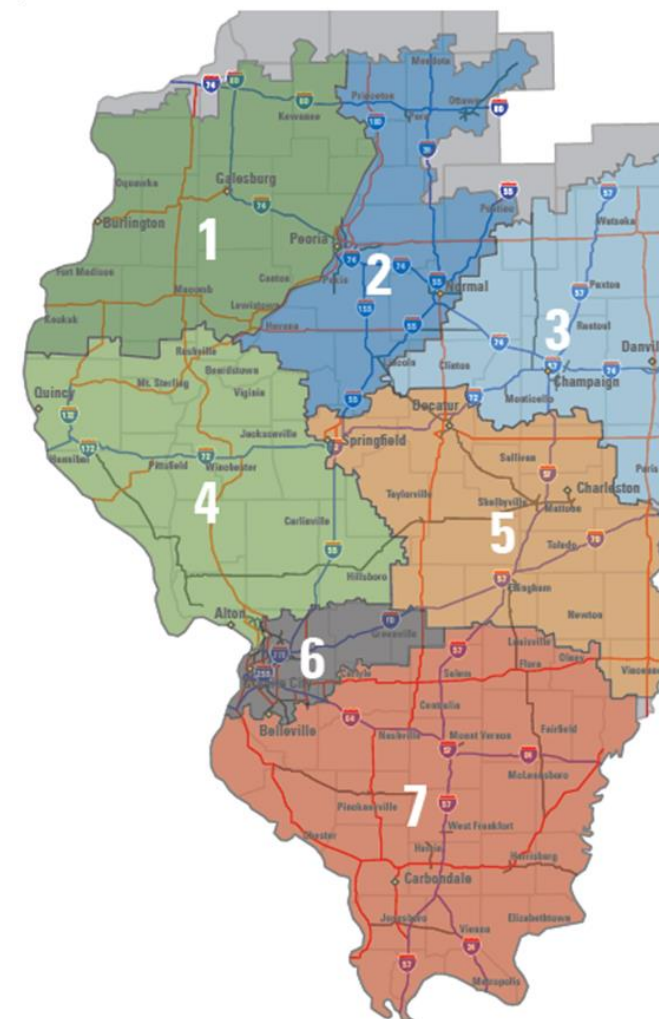
3 **Greg Ward**
gward@staplesenergy.com
1.262.336.4274

4 **Keith Williams**
kwilliams@skilldemand.com
1.312.983.0600

5 **Jason Noe**
jnoe@staplesenergy.com
1.262.409.1232

6 **Angela Schuchmann**
aschuchmann@skilldemand.com
1.312.983.0529

7 **Terry Tebbe**
ttebbe@skilldemand.com
1.312.983.0082



QUESTIONS?



Energy Efficiency
PROGRAM

AmerenIllinoisSavings.com